

LE2161783

Sprecher and Schuh L2 Cam Switch Switch Body 3 Pole Off On
16A Panel Mount



CAM SWITCHES

sprecher+
schuh



Component type	Off-load switch
Range	L2 Cam Switch
Model	N/A
Product status	Existing

The Sprecher+Schuh L2 range of rotary cam switches are designed for use in control and load switching based applications rated up to 25A. Available in a wide range of faceplate designs, frame sizes, switch body designs and accessories to suit various switching configurations. The modular construction allows for quick and easy assembly and installation while providing reliable operation.

ELECTRICAL

Number of poles	3
Rated operation power at AC-3, 400 V	5.5 kW
Rated operation current I _e at AC-15, 230 V	6 A
Rated operation current I _e at AC-15, 400 V	4 A
Rated operation current I _e at AC-22a, 690 V	16 A
Rated operation current I _e at AC-22a, 220-500 V	16 A
Rated operation current I _e at AC-21a, 690V	16 A
Rated operation current I _e at AC-1, 690V	16 A
I _{th} e, thermal current (enclosed)	16 A
I _{th} , thermal current (open)	20 A
Number of auxiliary contacts as normally closed contact	0
Number of auxiliary contacts as normally open contact	0
Number of auxiliary contacts as change-over contact	0
Type of electrical connection of main circuit	Screw connection

CONSTRUCTION

Model	On/Off switch
Mounting method	Front mounting
Material housing	Plastic
Wire/conductor size, rigid cable	1-2.5 mm ²
Wire/conductor size, flex cable	1-2.5 mm ²
Degree of protection (IP), front side	IP20
Suitable for front mounting	Yes
Complete device in housing	No
With zero (off) position	Yes
Mechanical life (service cycles)	1000000 cycles

MECHANICAL

LE2161783

Sprecher and Schuh L2 Cam Switch Switch Body 3 Pole Off On
16A Panel Mount



CAM SWITCHES



MECHANICAL	Number of switch positions	2
	With retraction in 0-position	No
DIMENSIONS	Depth	54 mm
	Width	42 mm
	Height	42 mm
ENVIRONMENT	Operating temperature	-25...60 °C

LE2161783

Sprecher and Schuh L2 Cam Switch Switch Body 3 Pole Off On
16A Panel Mount



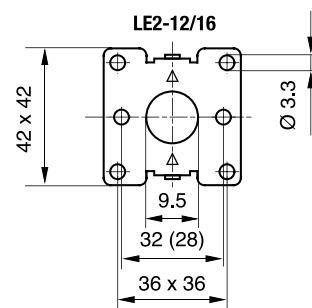
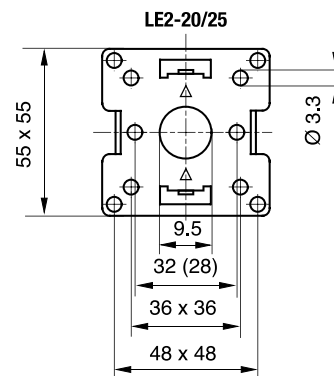
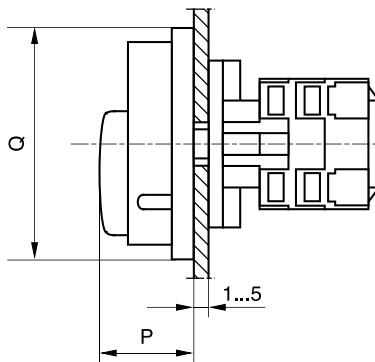
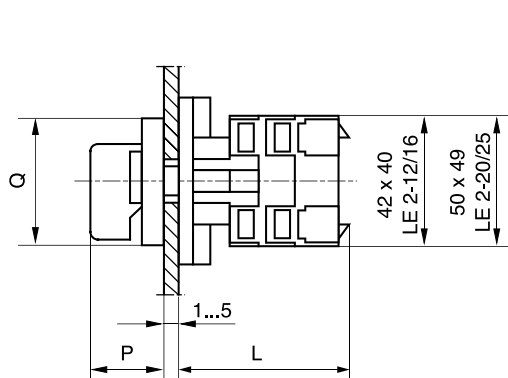
CAM SWITCHES

sprecher+schuh

DIMENSIONAL DIAGRAM

LE2 Panel Mount - Screw Fixing

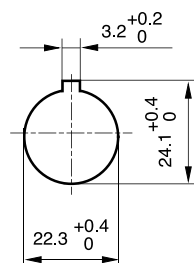
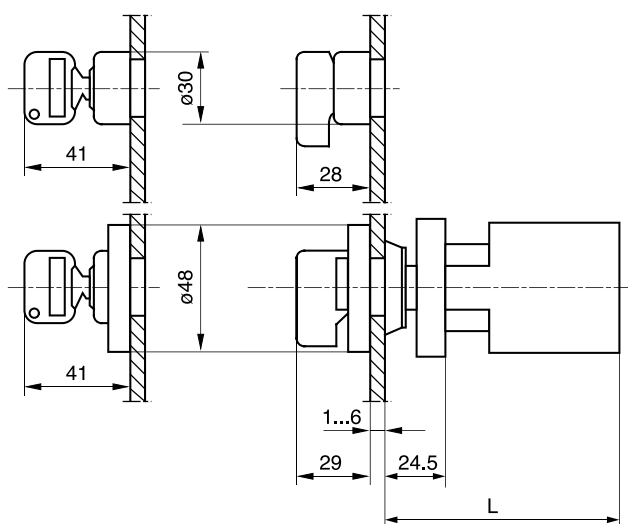
Dimensions are in millimeters (inches). Dimensions not intended for manufacturing purposes.



Type	"Q" Dim	"P" Dim
LFS2-A-4	48 X 48	28
LFS2-I-4	48 X 48	28
LFS2-S-4	48 X 62	28
LFS2-A-6	64 X 64	28
LFS2-I-6	64 X 64	28
LFS2-S-6	64 X 78	28
LFS2-N-6	67 X 67	34
LFS2-G-6	67 X 67	34

Type	"L" DIM (# of wafers)				
Type	1	2	3	4	5
LE2-12/16	44	54	64	74	84
LE2-20/25	44.5	57	69.5	82	94.5

LE2 Panel Mount - Central Nut Fixing



Type	"L" DIM (# of wafers)				
Type	1	2	3	4	5
LE2-12/16	67.5	77.5	87.5	97.5	107.5
LE2-20/25	69	81.5	94	106.5	119