

# 5069L330ERMS2

Allen-Bradley Compact GuardLogix 5380 SIL2 Pro 3MB  
Controller Mem and 1.5MB Safety Mem 60 Nodes M



MID-RANGE CONTROL SYSTEMS



<b>Component type</b>	PLC CPU-module
<b>Range</b>	Compact GuardLogix 5069
<b>Model</b>	N/A
<b>Product status</b>	Existing

The Allen-Bradley Compact GuardLogix 5069 Programmable Controller is a powerful industrial control system ideal for safety-critical applications. Providing higher performance, increased capacity, improved productivity and enhanced security to meet the growing demands of smart machines and manufacturing equipment. Includes programming Studio 5000 Logix Designer application.

## COMMUNICATION

Max. number of EtherNet/IP nodes	60
Can be programmed with Connected Components Workbench	No
Can be programmed with Studio 5000 Logix Designer	Yes

## CONSTRUCTION

Can be programmed with RSLogix 500	No
Memory size	3 MB
Suitable for safety functions	Yes

## DIMENSIONS

Width	98.1 mm
Height	143.97 mm
Depth	136.81 mm

## RELATED PRODUCTS

### ACCESSORY



**Item No:** 1784SD1  
**Required:** No  
**Description:** Allen-Bradley ControlLogix SD Card 1Gb



**Item No:** 1784SDHC32  
**Required:** No  
**Description:** Allen-Bradley ControlLogix SD Card 32Gb High Capacity



**Item No:** 1784SD2  
**Required:** No  
**Description:** Allen-Bradley ControlLogix SD Card 12Gb



**Item No:** 1784SDHC8  
**Required:** No  
**Description:** Allen-Bradley ControlLogix SD Card 8Gb High Capacity

# 5069L330ERMS2

Allen-Bradley Compact GuardLogix 5380 SIL2 Pro 3MB  
Controller Mem and 1.5MB Safety Mem 60 Nodes M



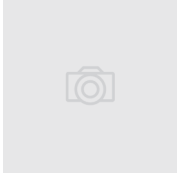
MID-RANGE CONTROL SYSTEMS



**Allen-Bradley**

## RELATED PRODUCTS

### ACCESSORY



**Item No:** 5069ECR

**Required:** No

**Description:** Allen-Bradley Compact 5000 End  
Cap for Adapter Or Controller

**Item No:** 5069RTB64SCREW

**Required:** No

**Description:** Allen-Bradley Compact 5000 I/O  
Power Terminal 6Pin and 4Pin Screw Type 1  
Set



**Item No:** 5069RTB64SPRING

**Required:** No

**Description:** Allen-Bradley Compact 5000 I/O  
Power Terminal 6Pin and 4Pin Spring Type 1  
Set