

# RZ7FSF3HU23

Sprecher and Schuh RZ7 Timer Relay Symm Ryc with Pulse  
24-48V DC/ 24-240VAC Sply 1CO 1.5-30mins



Component type	Timer relay
Range	RZ7
Model	N/A
Alternative	CALL FOR ALTERNATIVE

The Sprecher+Schuh range of RZ7-FS and FE electronic timing relays are a reliable, economical and flexible solution for control and timing application processes. Available in both single and multi-function timers with various timing modes and contact outputs ensuring flexible timing ranges from 0.05s and up to 300 hours. Offered in various width sizes including 17.5mm and 22.5mm, and designed for DIN rail mounting featuring 5A output current, coil surge protection and built-in LEDs for status monitoring.

Voltage type for actuating	AC/DC
Rated control supply voltage Us at DC	24-48 V
Rated control supply voltage Us at AC 60HZ	24-240 V
Rated control supply voltage Us at AC 50HZ	24-240 V
Number of outputs, delayed, change-over contact	1
Rated operation current Ie at DC-13, 24 V	1 A
Rated operation current Ie at AC-15, 250 V	3 A
Type of electric connection	Screw connection
Function delay-on energization	No
Function delay on de-energization	No
Function floating contact on energization	No
Function floating contact on de-energization	No
Function star-delta	No
Function pulse shaping	No
Function flashing, starting with pause, fixed time	No
Function flashing, starting with pulse, fixed time	No
Clock function, starting with pause, variable	Yes
Clock function, starting with pulse, variable	Yes
Time range	90-1800 s
Time setting accuracy	5 %
Power supply reset time	50 ms
Power consumption	0.5 VA
Electrical lifespan (control contacts)	200000 c (contacts)
Power consumption in operation	0.5 W

## ELECTRICAL

# RZ7FSF3HU23

Sprecher and Schuh RZ7 Timer Relay Symm Ryc with Pulse  
24-48V DC/ 24-240VAC Sply 1CO 1.5-30mins



## CONSTRUCTION

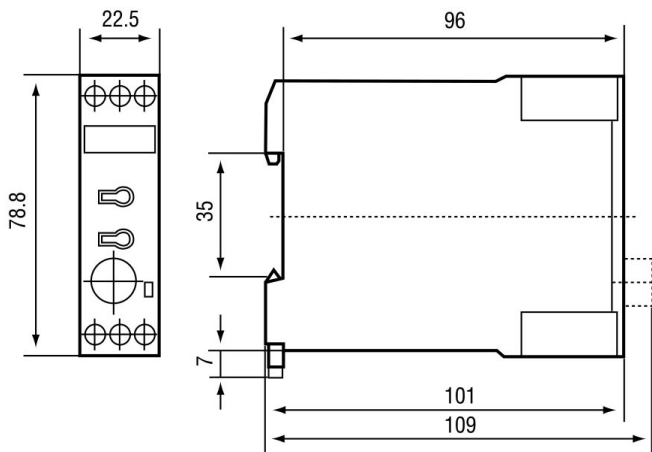
## MECHANICAL

## DIMENSIONS

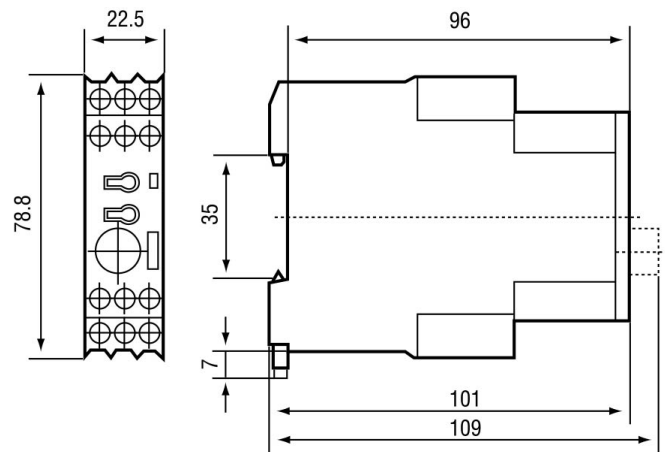
## ENVIRONMENT

Degree of protection (IP), front side	IP30
Degree of protection (IP), rear side	IP20
Suitable for DIN rail (top hat rail) mounting	Yes
Mechanical lifetime (control contacts)	3.0E7 c (contacts)
Max. shock acceleration	50 g
Max. vibration acceleration	4 m/s²
Max. vibration frequency, operational	100 Hz
Height	78.8 mm
Depth	109 mm
Width	22.5 mm
Operating temperature	-25...45 °C

## DIMENSIONAL DIAGRAM



RZ7-FS (1 C/O)



RZ7-FS (2 C/O)