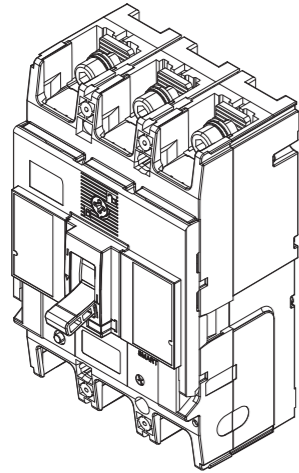


# INSTALLATION INSTRUCTIONS MOULDED CASE CIRCUIT BREAKERS TEMBREAK PRO P250 3P SMART ELECTRONIC



NHP Electrical Engineering Products Pty Ltd  
A.B.N. 84 004 304 812  
AUS 1300 NHP NHP | nhp.com.au  
NZ 0800 NHP NHP | nhp-nz.com

**TOOLS REQUIRED (NOT included)**

T1 Screwdriver Flathead (5mm)    T2 Screwdriver Phillips (#2)    T3 17mm Socket wrench    T4 6mm Allen key Socket wrench    T5 17mm Ring Spanner

**HARDWARE (included)**

A M8x20 Socket screw (6 qty)    B M8 spring washer (6 qty)    C M8 flat washer (6 qty)    D M4x55 mounting screws (2 qty)    E Interpole Barriers (2 qty)    Instruction Manual (This Document) (1 qty)

**HARDWARE (NOT included)**

F Lugs or Copper Bars    G \*M10x25 hex bolt (6 qty)    H \*M10 flat washer (6 qty)    I \*M10 Belleville washer (6 qty)    J \*M10 nut (6 qty)  
\*For extension bar connection only

**OPTIONAL (NOT included)**

K Extension Bars    L Terminal Covers    M Terminal Cover Lock    N Handle Lock    Internal Accessories

**MOUNTING ANGLES**

**MOUNTING**

TORQUE 1.3 - 1.7 Nm

**DIMENSIONS**

**CLEARANCE**

BR<sub>1</sub>, BR<sub>2</sub> = Adjacent MCCBs

MCCB Cat No.	Y min (mm)	Z min (mm)
P250F	0	25
P250N	0	25
P250H	0	25

BR<sub>1</sub>, BR<sub>2</sub> = Adjacent Isolators / MCCBs

MCCB Cat No.	W* min (mm)	X <sub>1</sub> min (mm)	X <sub>2</sub> min (mm)
P250F	50	40	30
P250N	80	80	30
P250H	80	80	30

**OPERATING INSTRUCTIONS**

Operation	Force (Nm)
OFF → ON	55
ON → OFF	40
TRIP → OFF	65

Trip Button

**DIRECTION OF POWER SUPPLY**

**INTERNAL ACCESSORIES ASSEMBLY PROCEDURE\***

**STEP 1 TRIP MCCB**

**STEP 2 OPEN COVER**

**STEP 3 IDENTIFY TRIP BAR & MECHANISM**

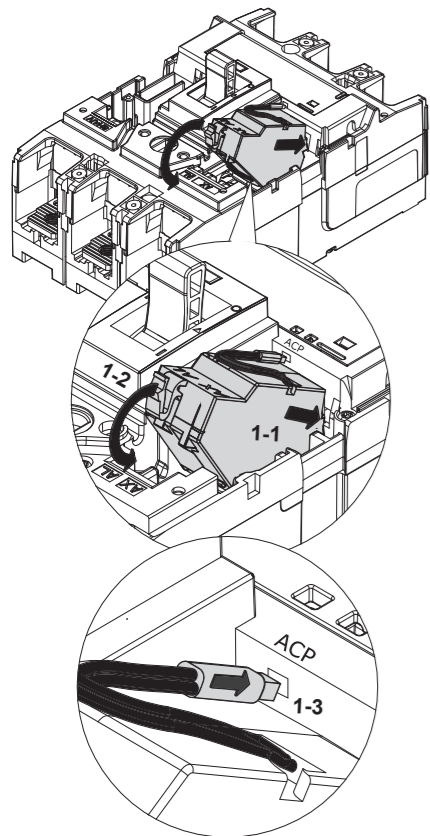
**STEP 4.1 UVT/SHUNT INSTALLATION**

**STEP 4.2 ALARM INSTALLATION**

**STEP 5 CLOSE MCCB COVER**

\*For additional internal accessory installations, scan QR code and refer to user manual for more details

SMART AXIAL INSTALLATION PROCEDURE

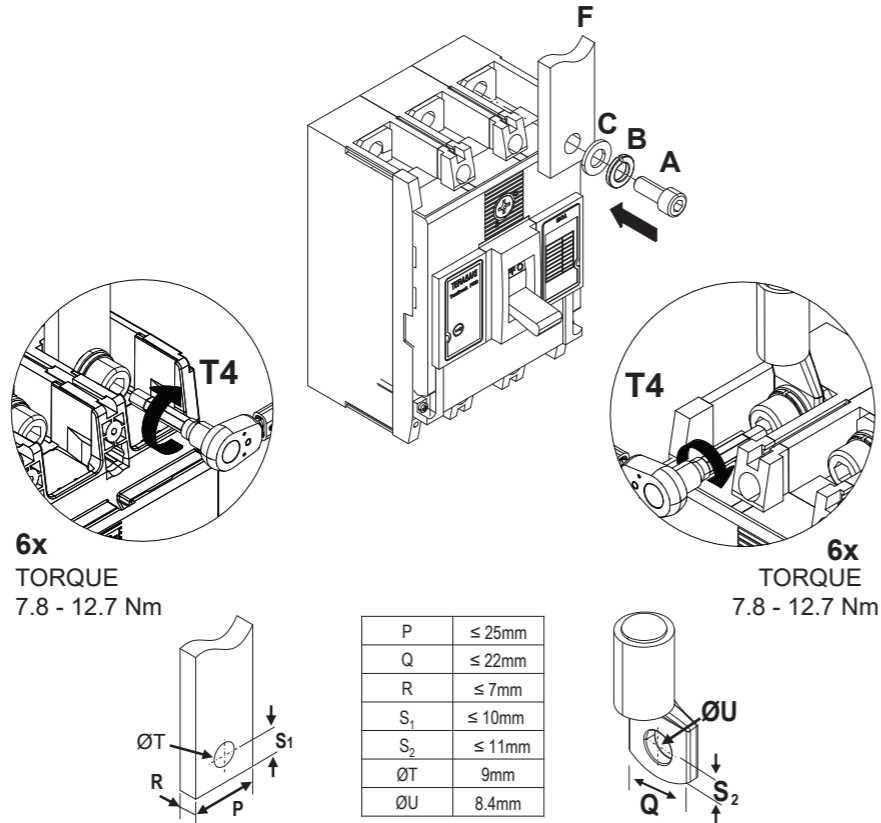


NOTE: SMART type AXIAL can only be installed in the LH side accessories chamber as shown above.

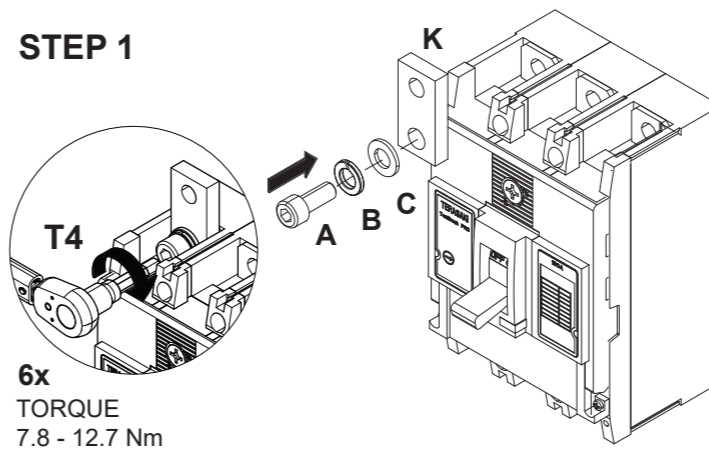
Follow steps 1,2 and 5 of 'Internal Accessories Mounting Procedure' to access and close the internal accessories chambers.

CONDUCTOR CONNECTION PROCEDURE -- FRONT CONNECTION -- EXTENSION BAR CONNECTION PROCEDURE

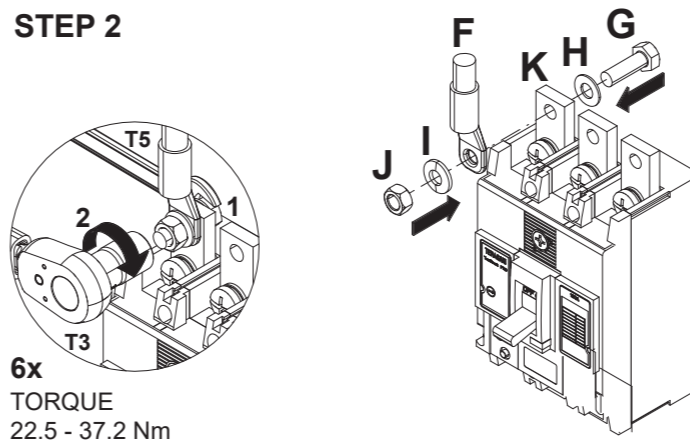
A	M8x20 Socket screw	F	Lug or copper bar	I	M10 Belleville washer
B	M8 Spring washer	G	M10x25 hex bolt	J	M10 Nut
C	M8 Flat washer	H	M10 Flat washer	K	Extension Bar



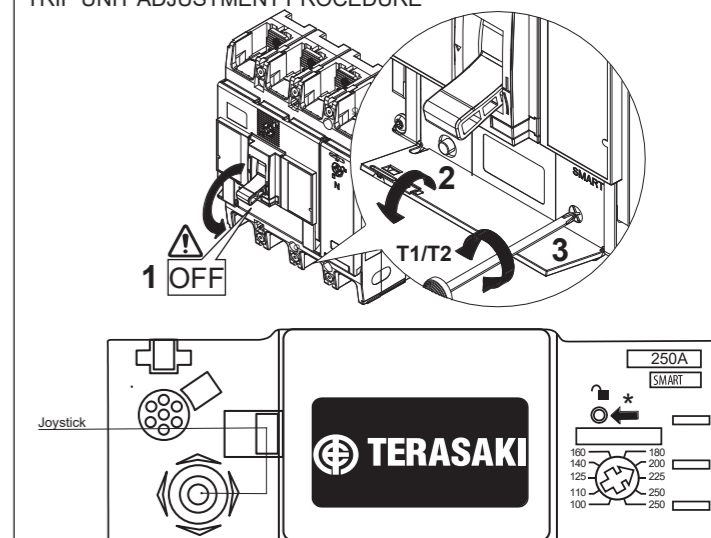
STEP 1



STEP 2



TRIP UNIT ADJUSTMENT PROCEDURE

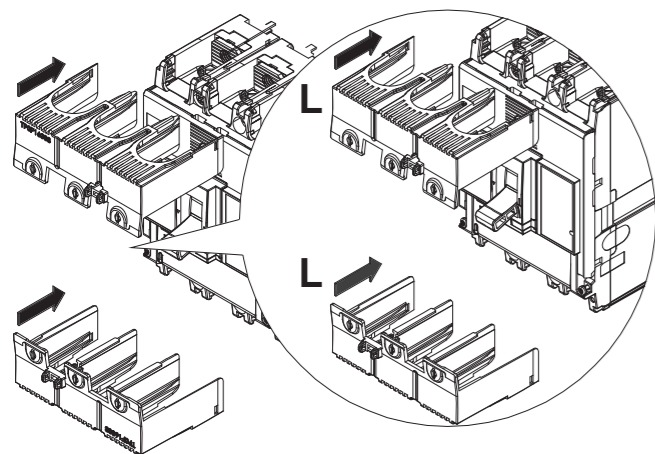


- NAVIGATION
- Adjust 'Ir' dial for desired rated current
  - To navigate between main menus, move joystick left or right
  - To navigate within a submenu, move joystick up or down
  - To confirm a setting change, press in the joystick

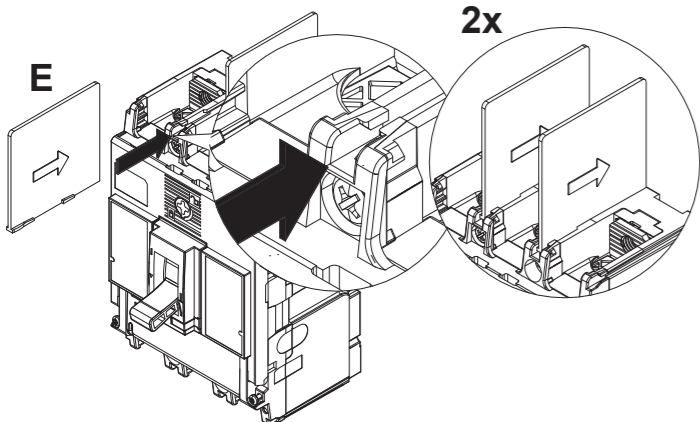
Protection	Measurement	Configuration	Information
DISPLAY ORIENTATION	STANDBY MODE	SCREEN BRIGHTNESS	

\*by default, the SMART OCR Protection settings are protected via a locking function, to unlock, please press the unlock button  
FOR MORE INFORMATION, PLEASE SCAN THE QR CODE

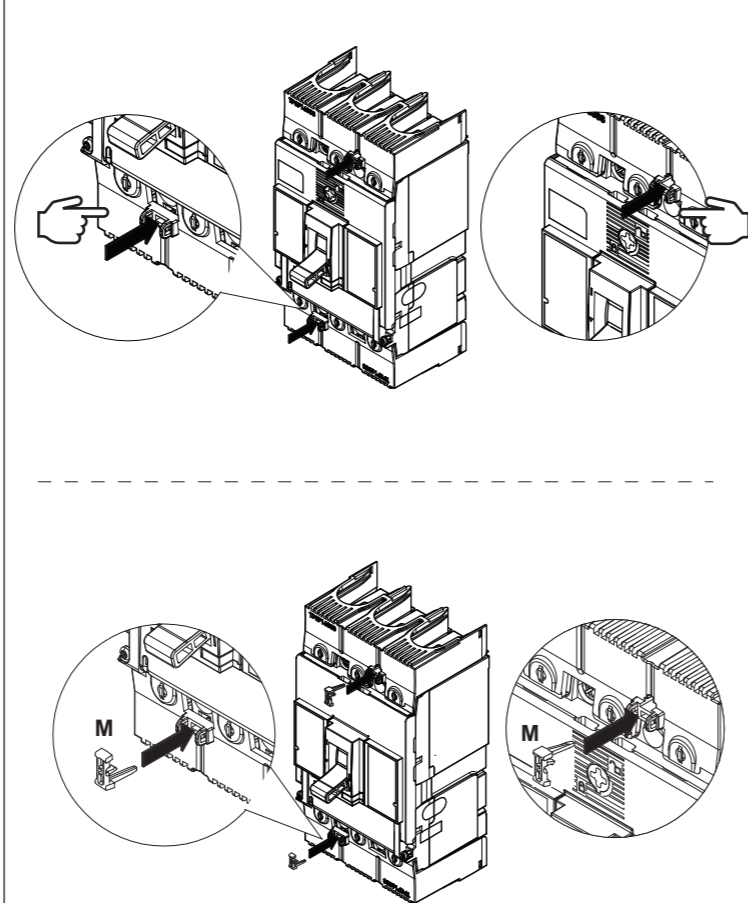
TERMINAL COVER



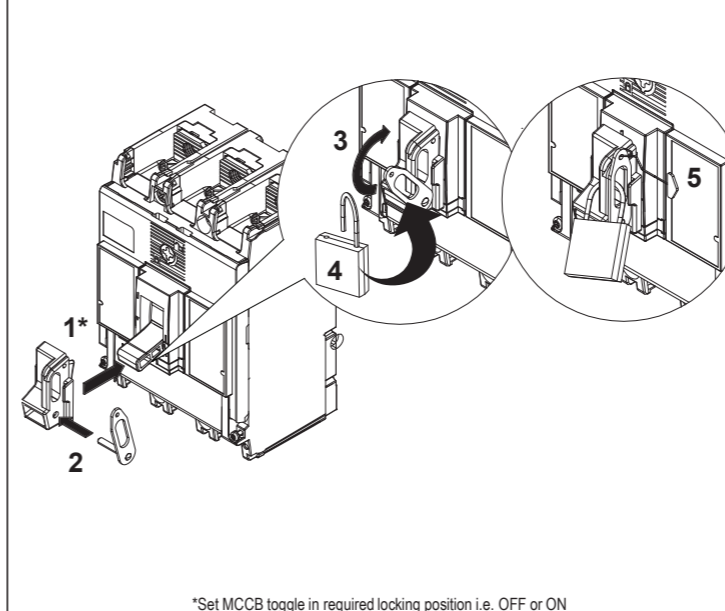
INTERPOLE BARRIER



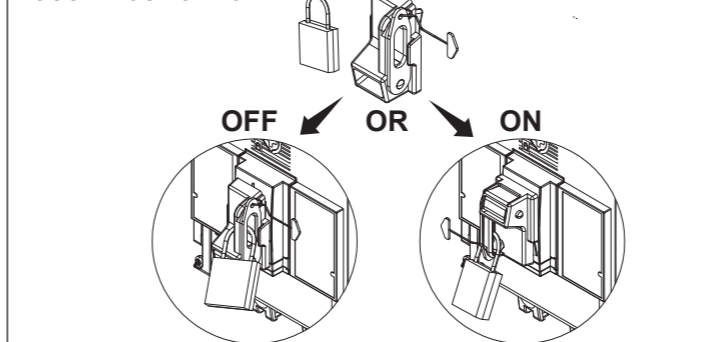
TERMINAL COVER LOCK



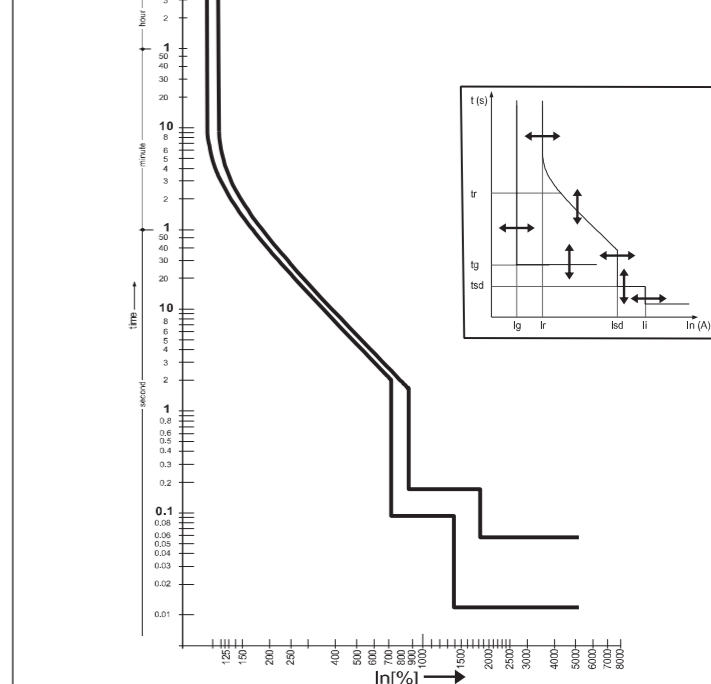
TOGGLE LOCK / PADLOCK ASSEMBLY PROCEDURE



TOGGLE LOCK OPTION



TIME CURRENT CHARACTERISTIC CURVE



	Threshold Adjustment	Time Setting
Long-time protection	(Ir)	(tr)
Short-time protection	(I <sub>sd</sub> )	(tsd) (I <sup>2</sup> t)
Instant protection	(I <sub>i</sub> )	
Protecting Earth	(I <sub>g</sub> )	(tg) (I <sup>2</sup> t)
Neutral protection	(N)	

NOTE: The protection menu consists of sub-menus to view and edit each OCR protection setting