

Standard enclosures

Quick selection guide

Smart Distribution



 nhpnz.co.nz

 0800 647 647

 sales@nhp-nz.com

Standard enclosures quick selection matrix

[Click image to go to selection](#)





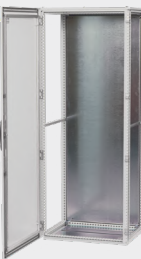



| Terminal boxes / industrial enclosures 95 x 65 x 60mm – 560 x 380 x 180mm | | |
|--|--|--|
| | Plastic | Metal |
| Indoor |  <p>Economic</p> <p>Acrylonitrile butadiene styrene</p> |  <p>Economic</p> <p>Mild steel</p> |
| Indoor / outdoor (UV rated) |  <p>Economic</p> <p>Polycarbonate</p> |  <p>Premium</p> <p>Stainless steel</p> |

| Wall mount enclosures 300 x 200 x 180mm – 1400 x 1000 x 300mm | | |
|--|--|--|
| | Plastic | Metal |
| Indoor |  <p>Economic</p> <p>Acrylonitrile butadiene styrene</p> |  <p>Standard</p> <p>Mild steel</p> |
| Indoor / outdoor (UV rated) |  <p>Premium</p> <p>Glass fibre reinforced polycarbonate</p> |  <p>Premium</p> <p>Stainless steel</p> |

Not sure what material to choose? [Click here](#)

Floor standing enclosures

1600 x 600 x 400mm – 2000 x 1200 x 600mm

| | Mild steel | | Stainless steel | |
|--|---|---|--|---|
| Stand-alone Comes with side covers |  <p>Single door</p> |  <p>Double door</p> |  <p>Single door</p> |  <p>Double door</p> |
| Bayable extendable Purchase side covers separately |  <p>Single door</p> |  <p>Double door</p> |  <p>Single door</p> |  <p>Double door</p> |



Terminal boxes

Terminal boxes are designed to offer a secure and protective enclosure for electrical connections, safeguarding against accidental contact, dust, moisture and other environmental factors.



ABS plastic - NLP terminal box range



- IP65 ingress protection / IK07 impact resistance
- Grey base RAL 7035 with grey or transparent cover
- Halogen free and RoHS compliant
- Cover screws - wire seal compatible
- Plain cover for printing, stickers and switches



| Dimensions (mm) | | | Enclosure | | Accessories below must be ordered separately | | | |
|-----------------|-----|-----|-----------------|------------------------|--|----------|--------------------|------------------|
| | | | | | Mounting plate (steel) | DIN rail | | |
| H | W | D | With grey cover | With transparent cover | | | Fixed horizontally | Fixed vertically |
| 95 | 65 | 60 | NLP090706 | NLP090706T | - | - | - | - |
| 110 | 110 | 65 | NLP111107 | NLP111107T | - | - | - | - |
| 130 | 95 | 65 | NLP131007 | NLP131007T | - | - | - | - |
| 130 | 130 | 75 | NLP131308 | NLP131308T | - | DR100 | DR100 | |
| 187 | 122 | 90 | NLP191209 | NLP191209T | MP1912 | DR100 | DR140 | |
| 187 | 122 | 134 | NLP191213 | - | MP1912 | DR100 | DR140 | |
| 201 | 163 | 98 | NLP201610 | NLP201610T | MP2016 | DR140 | DR180 | |
| 201 | 163 | 142 | NLP201614 | - | MP2016 | DR140 | DR180 | |
| 240 | 191 | 107 | NLP241911 | NLP241911T | MP2419 | DR160 | DR210 | |
| 240 | 191 | 151 | NLP241915 | - | MP2419 | DR160 | DR210 | |
| 289 | 239 | 107 | NLP292411 | NLP292411T | MP2924 | DR215 | DR265 | |
| 289 | 239 | 151 | NLP292415 | - | MP2924 | DR215 | DR265 | |
| 344 | 289 | 117 | NLP342911 | NLP342911T | MP3429 | DR260 | DR316 | |
| 344 | 289 | 157 | NLP342916 | - | MP3429 | DR260 | DR316 | |

Only the most popular sizes shown

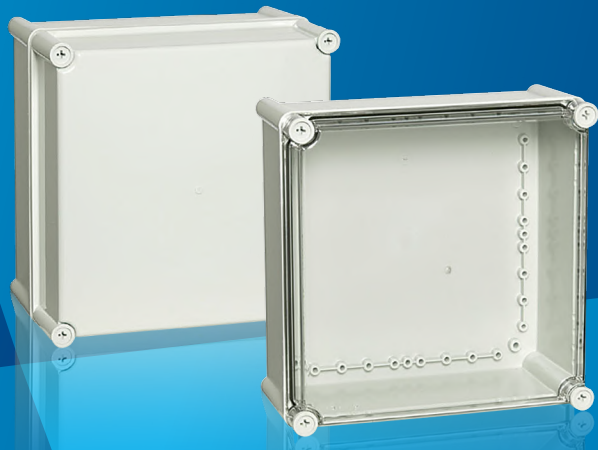


For further options and information, please see our Price List Catalogue **Section 13**



Polycarbonate – Solid range **FIBOX**

- IP66/67 ingress protection / IK08 impact resistance
- Halogen free
- Grey base RAL 7035 with grey or transparent cover
- Total insulation
- Smooth sided base



| Dimensions (mm) | | | Enclosure | | | Accessories below must be ordered separately | | | |
|-----------------|-----|-----|------------|-----------------|------------------------|--|-----------|-----------------|-------------------------|
| | | | | | | Mounting plate to suit* | | External hinges | Wall mounting brackets* |
| H | W | D | Base depth | With grey cover | With transparent cover | Steel | Insulated | | |
| 190 | 190 | 130 | 100 | PC191913G | PC191913T* | EKHVT* | EKHVTP | MB10622S | MB10674 |
| 280 | 190 | 180 | 100 | PC281918G | PC281918T* | EKJVT* | EKJVTP | | |
| 280 | 280 | 180 | 100 | PC282818G | PC282818T* | EKOVT* | EKOVTP | | |
| 380 | 280 | 180 | 100 | PC382818G | PC382818T* | EKPVT* | EKPVTP | | |
| 560 | 380 | 180 | 100 | PC563818G | PC563818T* | EKUVT* | EKUVTP* | | |

Only the most popular sizes shown



For further options and information, please see our Price List Catalogue **Section 13**

Mild steel – STB range



- IP66 ingress protection / IK08 impact resistance
- 1.2mm mild steel folded and seam welded with holes for wall mounting
- Colour grey RAL 7035 powder coated
- Polyurethane gasket, stainless steel captive cover screws
- Earthing studs M8 x 12 in body and cover



| Dimensions (mm) | | | Enclosure | Accessories below must be ordered separately | | | |
|-----------------|-----|-----|------------|--|------------------------------|-----------------|------------------------|
| H | W | D | | Mounting plate to suit (steel) | DIN profiles to suit (steel) | External hinges | Wall mounting brackets |
| 150 | 150 | 80 | STB151508* | BMP1515* | BPP15 | STBHO2* | AW41 |
| 200 | 200 | 120 | STB202012* | BMP2020* | BPP20 | | |
| 200 | 300 | 120 | STB203012* | BMP2030* | BPP20 | | |
| 300 | 400 | 120 | STB304012* | BMP3040* | BPP30 | | |



For further information of the STB range please see our full brochure.

Stainless steel – SSTB range



- IP66 ingress protection / IK08 impact resistance
- Body 1mm; cover: 1.5mm; 316L grade stainless steel
- Silicone gasket with almost zero water absorption
- Folded and seam welded with four M6 x 13 studs for mounting plate
- M8 x 18mm earthing studs in body and cover



| Dimensions (mm) | | | Enclosure | Accessories below must be ordered separately | | | |
|-----------------|-----|-----|----------------|--|------------------------------|-----------------|------------------------|
| H | W | D | | Mounting plate to suit (steel) | DIN profiles to suit (steel) | External hinges | Wall mounting brackets |
| 150 | 150 | 80 | SSTB151508316 | BMP1515* | BPP15 | STBHO2* | AW41 |
| 200 | 200 | 120 | SSTB202012316 | BMP2020* | BPP20 | | |
| 300 | 300 | 120 | SSTB303012316* | BMP3030* | BPP30 | | |



For further information of the SSTB range, please see our full brochure.

Only the most popular sizes shown

Wall mount enclosures

Wall mount enclosures provide secure and organised housing for electrical equipment, ensuring protection, accessibility and space efficiency in various applications.



ABS plastic - NLP wall mount range



- Galvanised steel mounting plate 1.5mm thick included
- IP65 ingress protection / IK08 impact resistance
- Halogen free
- Totally insulated
- Colour: grey RAL 7035 with grey hinged cover
- DIN 3mm lock



| Dimensions (mm) | | | Weight (kg) | Standard enclosure | Mounting plate - included | | Must be ordered separately | |
|-----------------|-----|-----|-------------|--------------------|---------------------------|-----|---|-----------------------------|
| H | W | D | | | H | W | Pre-cut DIN 35 mounting rail (Horizontal) | Wall mount brackets (qty 4) |
| 300 | 200 | 180 | 1.88 | NLP302018 | 270 | 170 | EKIV17 | FP12017 |
| | 300 | | 2.69 | NLP303018 | | 270 | EKIV27 | |
| 400 | | | 3.79 | NLP403018 | 370 | | | |
| 500 | 400 | 200 | 4.96 | NLP504020 | 470 | 370 | EKIV37 | |
| 600 | | 220 | 6.28 | NLP604022 | 570 | | | |

Only the most popular sizes shown

Accessories



Pre-cut DIN 35 mounting rail



Wall mounting brackets
Part # FP12017

Glass fibre reinforced polycarbonate – ARCA range **FIBOX**

- IP66 ingress protection / IK10 impact resistance
- Excellent protection against vandalism
- Mounting pods on the base; cover and four base sides
- Variable depth option for internal mounting plates
- Unique double corner design with mounting holes outside ingress protection area
- Life expectancy over 25 years when installed outside



| Dimensions (mm) | | | Enclosure catalogue no. | Accessories below must be ordered separately | | | |
|-----------------|-----|-----|-------------------------|--|--------------|----------------------|----------------|
| H | W | D | | Mounting plate - steel * | Inner door | DIN module frame set | Rows x modules |
| 300 | 200 | 150 | ARCA302015 | MPSARCA3020 | IDSARCA3020* | DRSARCA302015* | 1 x 5 |
| 400 | 300 | 210 | ARCA403021 | MPSARCA4030 | IDSARCA4030 | DRSARCA403021 | 2 x 10 |
| 500 | 400 | 210 | ARCA504021 | MPSARCA5040* | IDSARCA5040 | DRSARCA504021 | 3 x 16 |
| 600 | 400 | 210 | ARCA604021 | MPSARCA6040 | IDSARCA6040 | DRSARCA604021 | 3 x 16 |
| 700 | 500 | 300 | ARCA705030 | MPSARCA7050 | IDSARCA7050 | DRSARCA705030 | 4 x 21 |
| 800 | 600 | 300 | ARCA806030 | MPSARCA8060 | IDSARCA8060 | DRSARCA806030 | 4 x 27 |

*For an insulated mounting plate, add a 'P' to the end of the steel part number.

Only the most popular sizes shown

Accessories



Mounting plate



DIN rail mount set



Inner door



Depth adjust kit

- CBSARCA15 for 150mm deep
- CBSARCA21 for 240mm deep
- CBSARCA30 for 300mm deep



Wall mount brackets

- WMKARCA10 up to 6040
- WMKARCA10M sizes 7050 & 8060



For further options and information on the ARCA range, please see our full brochure.



Mild steel – MAS/MAD range



- IP55 ingress protection / IK10 impact resistance
- RAL 7035 powder coated also available in X15 range
- Folded and seam welded
- Concealed hinges providing 130° opening and clean smooth lines
- One piece polyurethane seal
- 2mm galvanised steel mounting plate and gland plate included



MAS (single door) and MAD (double door) range

| Dimensions (mm) | | | Weight (kg) | Standard enclosure with mounting plate and lock | Must be ordered separately | |
|-----------------|------|-----|-------------|---|----------------------------|----------------------|
| H | W | D | | | Inner door | DIN module frame set |
| 300 | 300 | 150 | 5.3 | MAS0303015R5 | - | - |
| 400 | 300 | 210 | 7.5 | MAS0403021R5 | ADI04030R5* | AC04030R5* |
| 400 | 400 | 210 | 9.5 | MAS0404021R5 | - | - |
| 500 | 400 | 210 | 11.7 | MAS0504021R5 | ADI05040R5* | AC05040R5 |
| 600 | 400 | 210 | 13.2 | MAS0604021R5 | ADI06040R5* | AC06040R5 |
| 600 | 600 | 300 | 24 | MAS0606030R5 | ADI06060R5* | AC06060R5* |
| 800 | 600 | 210 | 27 | MAS0806021R5 | ADI08060R5* | AC08060R5* |
| 800 | 1200 | 300 | 60 | MAD0801230R5* | - | - |
| 1200 | 1200 | 300 | 86 | MAD1201230R5* | - | - |
| 1400 | 1000 | 300 | 84 | MAD1401030R5* | - | - |

Only the most popular sizes shown

Accessories

Mounting plate (steel)

Modular chassis

Rain hood

Inner door

Wall mounting brackets Part # AW41

Key and lock combinations

Depth adjustment kit

Gland plates

Plinths

For further options and information on MAS/MAD range, please see our full brochure.

Stainless steel – ASR/ADR/SRE range



- IP66 (single door), IP55 (double door) ingress protection / IK10 impact resistance
- 316L stainless steel body and door with 130° opening
- Silicone gasket provides improved chemical resistance
- Mounting plate marked at 10mm intervals for easy horizontal positioning is included.



ASR/ADR range (flat top with 20mm overhang)

| Enclosure dimensions (mm) | | | Weight (kg) | Standard enclosure with mounting plate and lock | Accessories below must be ordered separately | | |
|---------------------------|-----|-----|-------------|---|---|---------------------------------|--------------------------------------|
| H | W | D | | | Wall mount brackets to suit (stainless steel) | Inner door to suit (mild steel) | Rain hoods to suit (stainless steel) |
| 300 | 200 | 150 | 12.8 | ASR0302015316 | AWS41316 | - | - |
| 400 | 400 | 210 | 23.7 | ASR0404021316 | | ADI04040R5 | ASST042316* |
| 600 | 400 | 210 | 12.8 | ASR0604021316 | | ADI06040R5* | ASST042316* |
| 800 | 600 | 210 | 23.7 | ASR0806021316 | | ADI08060R5 | ASST062316* |
| 1000 | 800 | 300 | 12.8 | ASR1008030316 | | ADI10080R5* | ASST083316* |
| 1400 | 800 | 300 | 23.7 | ASR1408040316* | | - | ASST084316* |

Only the most popular sizes shown



For further options and information on the ASR/ADR range, please see our full brochure.

38° sloped roof enclosure range

| Enclosure dimensions (mm) | | | Weight (kg) | Standard enclosure | Mounting plate - included | | Must be ordered separately |
|---------------------------|-----|-----|-------------|--------------------|---------------------------|-----|---------------------------------|
| H | W | D | | | H | W | Inner door to suit (mild steel) |
| 300 | 200 | 150 | 5 | SRE0302015316* | 270 | 150 | - |
| 400 | 300 | 210 | 8 | SRE0403021316* | 370 | 250 | ADI04030R5* |
| 600 | 400 | 260 | 16 | SRE0604026316* | 570 | 350 | ADI06040R5* |
| 800 | 600 | 300 | 31 | SRE0806030316* | 770 | 550 | ADI08060R5* |

Only the most popular sizes shown

Stainless steel - nVent HOFFMAN ASR/ADR/SRE range



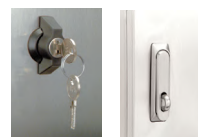
Rain hood (ASR/ADR only)



Inner door



Wall mounting brackets (ASR/ADR only)



Key and lock combinations



Ventilation grilles



For further options and information of the SRE range, please see our full brochure.

Floor standing enclosures

Floor standing enclosures are versatile and practical solutions for housing and protecting electrical equipment in various applications. These enclosures are designed to stand freely on the floor, providing a stable and secure housing for sensitive components such as switchgear, control panels and automation systems. Floor standing enclosures are available in mild steel, aluminium and stainless steel, offering durability and resistance to environmental factors.



Mild steel – standalone MKS/ MKD range



- IP55 (single/double door) ingress protection
- RAL 7035 powder coated
- Four times folded and seam welded frame
- Removable roof panels
- Four point locking system with 3mm DIN lock
- Fully formed
- Adjustable mounting plate
- Large range of accessories
- Plinths available in 100mm and 200mm heights



| Dimensions (mm) | | | Standard enclosure | Must be ordered separately | | |
|-----------------|------|-----|-------------------------|---|---|-----------------------------------|
| H | W | D | | Plinth front and rear panels to suit (100mm high) * | Plinth side panels to suit (100mm high) * | Inner door with 2 locks & handles |
| 1600 | 600 | 400 | MKS16064R5 ⁺ | PF1060 | PS1040 | DI1606R5 |
| | 800 | | MKS16084R5 | PF1080 | | - |
| | 1000 | | MKS16104R5 ⁺ | PF1100 | | - |
| | 1200 | | MKD16124R5 ⁺ | PF1120 | | - |
| 1800 | 600 | 400 | MKS18064R5 ⁺ | PF1060 | PS1040 | DI1806R5 ⁺ |
| | 800 | | MKS18084R5 | PF1080 | | DI1808R5 |
| | 1000 | | MKS18104R5 | PF1100 | | DI1810R5 ⁺ |
| | 1200 | | MKD18124R5 | PF1120 | | - |
| | 1600 | | MKD18164R5 | PF1080 (X2) | | - |
| 2000 | 800 | 400 | MKS20084R5 ⁺ | PF1080 | PS1040 | DI2008R5 ⁺ |
| | 1000 | | MKS20104R5 | PF1100 | | DI2010R5 ⁺ |
| | 1200 | | MKD20124R5 ⁺ | PF1120 | | - |
| | 1600 | | MKD20164R5 | PF1080 (X2) | | - |

*Set of two.

Only the most popular sizes shown



For further options and information on the MKS/MKD range, please see our full brochure.

Mild steel – bayable MCS/MCD range



- RAL 7035 powder coated
- Seam welded reversed open profiles
- Doors can be mounted for left or right openings
- Removable roof panels
- Four point locking system with 3mm DIN lock
- Adjustable mounting plate
- Side panels sold separately
- Modular design
- Ideal when buying or combining cabinets

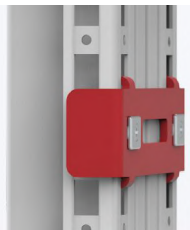


| Dimensions (mm) | | | Standard enclosure | Must be ordered separately | | | |
|-----------------|------|-----|--------------------|----------------------------|---|---|-----------------------------------|
| H | W | D | | Side panels * | Plinth front and rear panels to suit (100mm high) * | Plinth side panels to suit (100mm high) * | Inner door with 2 locks & handles |
| 1800 | 600 | 400 | MCS18064R5 | SPM1804R5 | PF1060 | PS1040 | DI1806R5* |
| | 800 | | MCS18084R5 | | PF1080 | | DI1808R5 |
| 2000 | 600 | 400 | MCS20064R5* | SPM2004R5* | PF1060 | PS1040 | DI2006R5* |
| | 800 | | MCS20084R5* | | PF1080 | | DI2008R5* |
| | 1200 | | MCD20124R5* | | PF1120 | | - |
| 1800 | 600 | 500 | MCS18065R5* | SPM1805R5* | PF1060 | PS1050 | DI1806R5* |
| | 800 | | MCS18085R5* | | PF1080 | | DI1808R5* |
| | 1000 | | MCS18105R5* | | PF1100 | | DI1810R5* |
| | 1200 | | MCD18125R5* | | PF1120 | | - |
| 2000 | 800 | 500 | MCS20085R5 | SPM2005R5 | PF1080 | PS1050 | DI2008R5* |
| | 800 | | MCD20085R5* | | PF1080 | | - |
| | 1200 | | MCD20125R5 | | PF1120 | | - |
| 2000 | 800 | 600 | MCS20086R5* | SPM2006R5 | PF1080 | PS1060 | DI2008R5* |
| | 1200 | | MCD20126R5 | | PF1120 | | - |

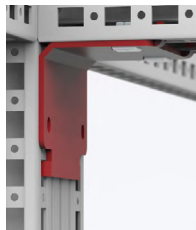
*Set of two.

Only the most popular sizes shown

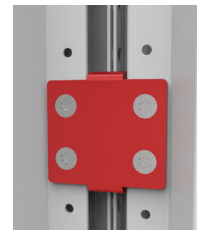
Accessories



CCI6 - Internal snapline baying bracket (set of 6)



CCM04 - Internal corner snapline baying bracket (set of 4)



CCE06 - External baying bracket (set of 6)



For further options and information on the MCS/MCD range, please see our full brochure.



Floor standing CCM-CCI mounting instructions.

Stainless steel– standalone EKSS/EKDS range



- IP66 ingress protection (single door models and double door models with centre mullion)
- IP55 ingress protection (standard double door models without centre mullion)
- IK10 impact resistance
- AISI 316L pre-grained stainless steel
- One piece body with integrated depth profiles
- Removable rear panels and adjustable mounting plate
- Four point locking system with chrome plated 3mm DIN lock
- Plinths available in 100mm and 200mm heights



Models below are IP66 with a single door.

| Dimensions (mm) | | | Weight (kg) | Standard enclosure | Accessories below must be ordered separately | |
|-----------------|------|-----|-------------|--------------------|---|---|
| H | W | D | | | Plinth front and rear panels to suit (100mm high 316L stainless steel)* | Plinth side panels to suit (100mm high 316L stainless steel)* |
| 1800 | 600 | 400 | 90 | EKSS18064316 | PFS1060316 | PSS1040316 |
| | 800 | | 117 | EKSS18084316* | PFS1080316* | |
| | 1000 | | 138 | EKSS18104316 | PFS1100316 | |

Models below are IP66 and are supplied with a centre mullion.

| | | | | | | |
|------|------|-----|-------|-----------------|------------------|------------|
| 1800 | 1200 | 400 | 151.9 | EKDS181244X316* | PFS1120316* | PSS1040316 |
| | 1600 | | 198 | EKDS181644X316* | PFS1080316 (X2)* | |
| 2000 | 1200 | | 166.8 | EKDS201244X316* | PFS1120316* | |
| | 1600 | | 216.4 | EKDS201644X316* | PFS1080316 (X2)* | |

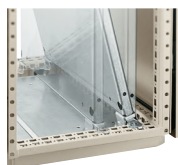
*Set of two.

Only the most popular sizes shown

Accessories



Glazed and inner door



Mounting plates and adjustment brackets



Plinths



Rain hood



Swing handles and inserts



Enclosure lights



For further options and information on the EKSS/EKDS range, please see our full brochure.

Stainless steel – bayable MCSS/MCDS range*



- IP55 (single/double door) ingress protection / IK10 impact resistance
- Seam welded reversed open profiles with integrated depth profiles
- AISI 316L pre-grained stainless steel
- Doors can be mounted for left or right openings
- Removable roof panels and adjustable mounting plate
- Four point locking system with chrome plated 3mm DIN lock
- Side panels sold separately



* This range has limited stock. Please contact NHP for leadtimes.

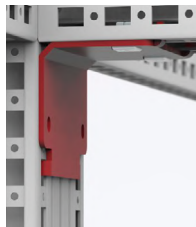
| Dimensions (mm) | | | Weight (kg) | Enclosure | Must be ordered separately | | |
|-----------------|------|-----|-------------|---------------|--|---|---|
| H | W | D | | | Side panels to suit (set of two, 316L stainless steel) * | Plinth front and rear panels to suit (100mm high, 316L stainless steel) * | Plinth side panels to suit (100mm high, 316L stainless steel) * |
| 1800 | 800 | 500 | 117 | MCSS18085316* | SPMS1805316* | PFS1080316* | PSS1050316* |
| | 1200 | | 178 | MCDS18125316* | SPMS1805316* | PFS1120316* | |
| 2000 | 800 | 600 | 131 | MCSS20086316* | SPMS2006316* | PFS1080316* | |
| | 1200 | | 196 | MCDS20125316* | SPMS2006316* | PFS1120316* | |

Only the most popular sizes shown

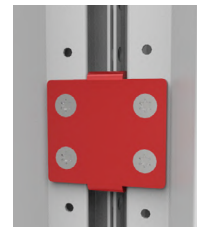
Accessories



CCI6 - Internal snapline baying bracket (set of 6)



CCM04 - Internal corner snapline baying bracket (set of 4)



CCE06 - External baying bracket (set of 6)



For further options and information on the MCSS/MCDS range, please see our full brochure.



Floor standing CCM-CCI mounting instructions.



Comparison of enclosure material

The performance and limitations of an enclosure are dependent on the material it is made of. This section gives an indication of benefits and drawbacks of the various materials on offer.

Acrylonitrile butadiene styrene

Benefits

- Easy machining with normal tools
- Easy colouring through pigmentation
- Light weight
- Good resistance to chemical attack
- Excellent insulating properties
- RF transparent, ideal for telemetry applications

Drawbacks

- Slightly lower impact resistance and operating temperature range compared with polycarbonate
- Slightly lower UV resistance compared with polycarbonate
- No EMC shielding



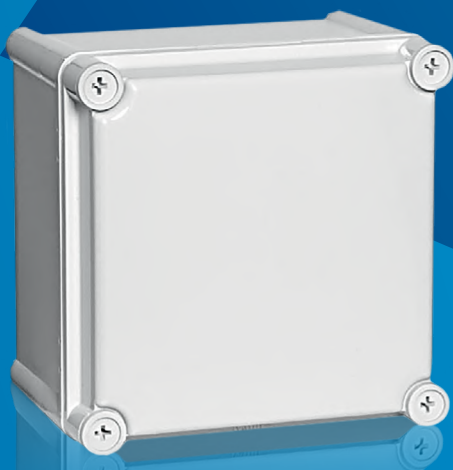
Polycarbonate

Benefits

- High impact resistance
- Easy machining with normal tools
- High IP rating
- Wide operating temperature range
- Self-extinguishing
- Good resistance to chemical attack
- RF transparent, ideal for elementary applications
- Light weight
- Good UV resistance
- Excellent insulating properties
- Cost-effective material for harsh environments
- High weather resistance

Drawbacks

- No EMC shielding



Glass fibre reinforced polycarbonate

Benefits

- IP66 high IP rating
- Very high impact resistance - able to withstand impact up to IK10
- Excellent protection against vandalism
- Easy to machine with standard tools
- RF transparent, ideal for elementary applications
- Self-extinguishing
- Light weight
- High UV and weather resistance
- Wide operating temperature range

Drawbacks

- No EMC shielding



Mild steel

Benefits

- Good resistance to chemical attack (powder coated RAL 7035)
- High impact resistance
- Wide operating temperature range
- Easy earthing
- MC shielding
- Rigid construction

Drawbacks

- More expensive than polycarbonate
- Heavier than Polycarbonate and Acrylonitrile butadiene styrene
- Prone to corrosion
- Machining with special tools only



316L stainless steel (SS)

Benefits

- Good resistance to chemical attack and corrosion
- High impact resistance
- Wide operating temperature range
- Easy earthing
- High weather resistance
- Hygienic and attractive appearance
- EMC shielding
- Good heat sink properties
- Rigid construction



Drawbacks

- More expensive than polycarbonate and mild steel
- Heavier than Polycarbonate and Acrylonitrile butadiene styrene
- Difficult to fabricate
- Machining with special tools only

Material performance overview

The following table gives a comparative view, showing the chemical resistance of the various enclosure materials.

| | Acrylonitrile butadiene styrene | Polycarbonate | Glass fibre reinforced polycarbonate | Powder coated | 316L grade stainless steel |
|------------------------------|---------------------------------|---------------|--------------------------------------|---------------|----------------------------|
| Outdoor use | ● | ●●●● | ●●●●● | ●●● | ●●●●● |
| Indoor use | ●●●●● | ●●●●● | ●●●●● | ●●●●● | ●●●●● |
| Cost | ●●●●● | ●●● | ●●●● | ●●● | ● |
| Light weight | ●●●●● | ●●●●● | ●●●●● | ● | ● |
| High rigidity | ● | ●●● | ●●●●● | ●●●●● | ●●●●● |
| Impact resistance | ●● | ●●●● | ●●●●● | ●●●●● | ●●●●● |
| Salt water environments | ●● | ●●●●● | ●●●●● | ●● | ●●●●● |
| Neutral salts | ●● | ●●●●● | ●●●●● | ●● | ●●●●● |
| Acids, low concentrations | ●●●● | ●●●●● | ●●●●● | ●●● | ●●●●● |
| Acids, high concentrations | ● | ●●● | ●●● | ● | ●●● |
| Alkalis, low concentrations | ●●●●● | ●●● | ●●●●● | ●●●●● | ●●●●● |
| Alkalis, high concentrations | ●●●● | ● | ● | ●●●● | ●●●● |
| Petroleum | ● | ●●● | ●●●●● | ●●●●● | ●●●●● |
| Hydraulic oil | ●●●●● | ●●●●● | ●●●●● | ●●●● | ●●●●● |
| Alcohols | ●●● | ●●●● | ●●●●● | ●●●●● | ●●●●● |
| Solvents | ● | ● | ●●●●● | ●●●● | ●●●●● |
| Cooling fluids | ●●●●● | ●●● | ●●●● | ●●● | ●●●●● |

● = Poor
●●●●● = Excellent

Data subject to change without notice.

This table is only to be used as a guide. Environmental conditions must be considered when selecting your enclosure material. Detailed chemical resistance data is available on request.

Industrial enclosure customisation

NHP can also customise industrial enclosures to suit your specification.

Through our state of the art computer numerical control machining system, we can perform milling as well as engraving and cutting to any specification in three dimensions to the highest precision, ensuring your demands are met.

- Cost effective customisation for specific applications
- Quick turnaround with high repeatability including threaded and unthreaded holes, cable entries, cut-outs on any side of the enclosure
- Industrial enclosure materials
 - Acrylonitrile butadiene styrene
 - Polycarbonate
 - Glass reinforced polycarbonate
 - Polyester
 - Aluminium
- In-house CNC machinery setup in Melbourne

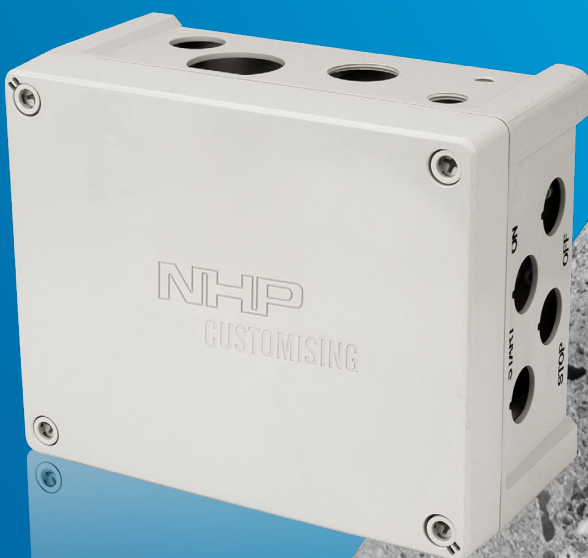
Whether the specifications and quantities are large or small, NHP's focus is on providing a tailored solution with prompt delivery to all locations across Australia and New Zealand.

Why NHP?

While our customers' challenges may be complex, their ultimate goal is simple - run a profitable, safe and sustainable operation.

NHP is committed to servicing the needs of our customers. With 55 years of experience in the electrical and engineering industry, our specialist teams work collaboratively to design and deliver solutions to maximise the success of your project.

We bring together internationally recognised automation, motor control and power distribution products with local knowledge and expertise to deliver best practice services from concept design through to installation and after-sales service, including project management.





24/7/365
emergency service



Extensive local
stockholding



Service network throughout
Australia and New Zealand



Extensively trained and
qualified service technicians



NHP project
management



Customised
manufactured solutions



Scan the QR code to view the
CNC milling solution in action.





nhp.com.au
SALES 1300 NHP NHP
sales@nhp.com.au

nhpnz.co.nz
SALES 0800 NHP NHP
sales@nhp-nz.com

NHP ELECTRICAL ENGINEERING PRODUCTS

A.B.N. 84 004 304 812

© COPYRIGHT NHP 2023

NHP16BCH 03/24